



# 3 Latchbolts

Multipoint gear lock.



Education



Residential



Commercial



Healthcare



Hospitality



## 3 LATCHBOLTS

Multipoint gear lock with central, top and bottom latchbolts.

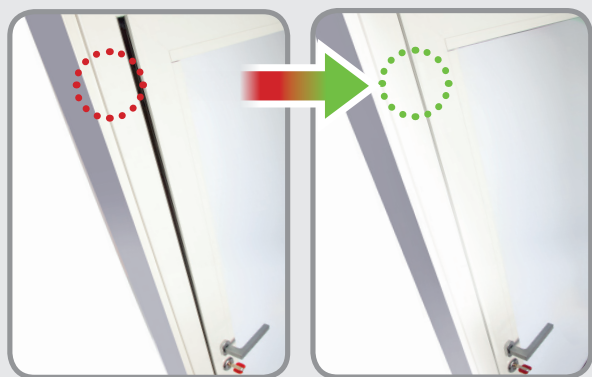
### SECURITY GUARANTEED EVEN WITHOUT A KEY

- When the door is closed, the 3 latchbolts automatically engage without having to use the key.
- The combination of 3 latchbolts and 3 deadbolts guarantees unbeatable security against forced entry.

### CORRECTS HEAT DISTORTION OF THE DOOR

The 3 latchbolt locking system effectively corrects distortion of the door due to sudden changes in temperature.

The rack mechanism makes easier to turn the key.



### APPLICATIONS

- Entrance doors
- Secondary entrance doors

### BENEFITS



#### For end users

- Locks in 3 different points without using the key.
- Energy savings and better noise insulation.



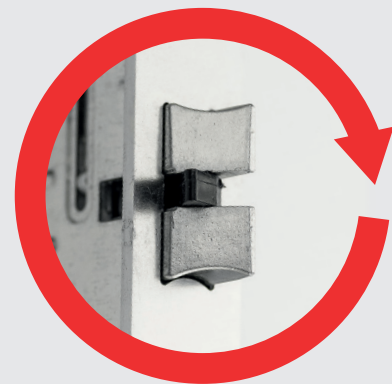
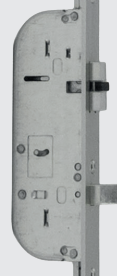
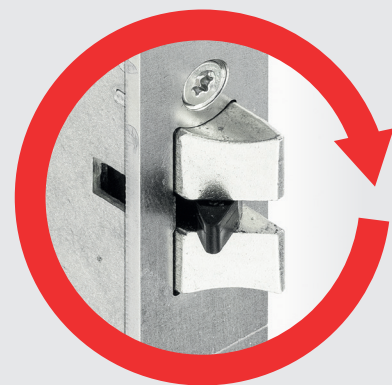
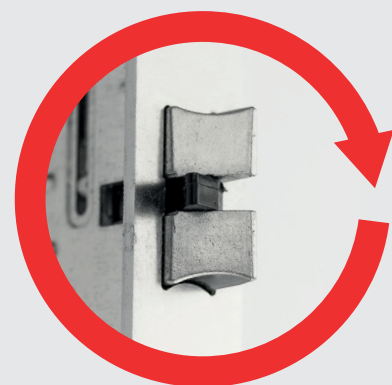
#### For locksmiths

- Cuts maintenance times and costs.
- Door perfectly aligned.



#### For designers and architects

- The lock is designed according to European Standard prEN15685.
- Operates with a Euro profile cylinder and can be integrated into master key systems to manage access.



## OPERATION

From the inside and outside: the 3 latchbolts automatically engage when the door is closed without having to use the key and the door is therefore always locked in 3 points.

- From the inside: the 3 latchbolts can be opened using the key or by simply turning the handle.
- The 3 deadbolts can only be opened and closed using the key. By engaging the deadbolts, the handle is placed in the neutral position and the latchbolts cannot be withdrawn.
- From the outside: the 3 latchbolts can only be opened using the key. The 3 deadbolts can only be opened and closed using the key.

### Benefit:

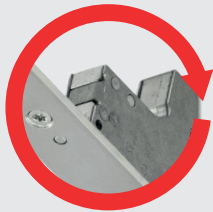
- Easy to use, as the key is not needed to lock the door.

## 15.5 MM THICK CLOSED CASE

The lock and divertors cases are enclosed and 15.5 mm thick.

### Benefits:

- Dirt and dust cannot get in.
- Eliminates the possibility of damage during installation.
- Fewer holes are needed on the profile and the lock is correctly installed on thermal cut and European groove profiles.



## SILENT LATCHBOLTS

- The 3 latchbolts in the lock have a special (anti-friction) device which makes closing smooth and silent.

### Benefit:

- Less noise.

## STRIKES

- Transverse adjustment to ensure the door is correctly installed.
- Nylon case to protect the appearance of the deadbolt hole.

The kit consists of:

Strike for central lock

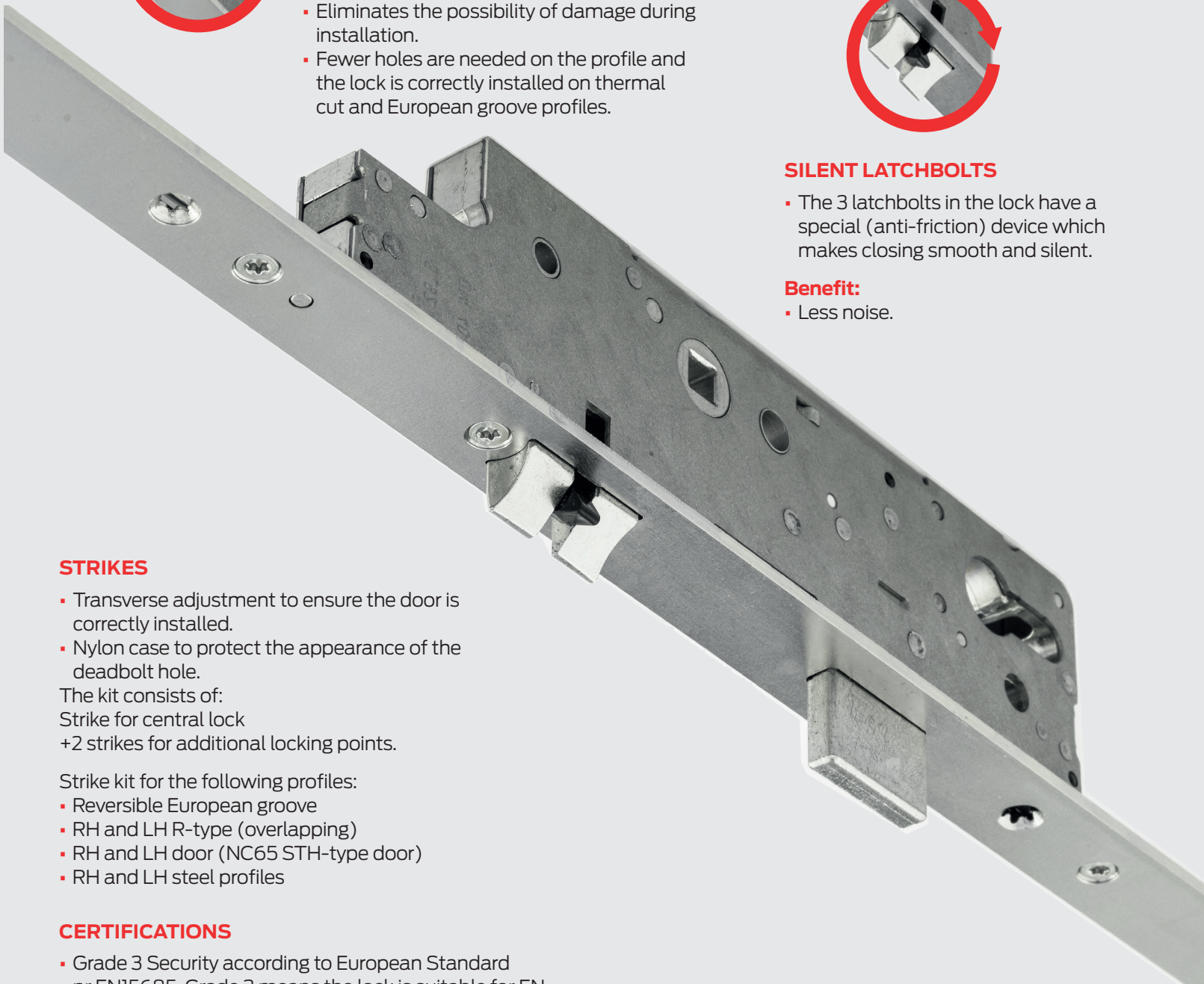
+2 strikes for additional locking points.

Strike kit for the following profiles:

- Reversible European groove
- RH and LH R-type (overlapping)
- RH and LH door (NC65 STH-type door)
- RH and LH steel profiles

## CERTIFICATIONS

- Grade 3 Security according to European Standard pr EN15685. Grade 3 means the lock is suitable for EN 1627 certified doors up to resistance class WK/RC 2.
- The lock can be CE-certified by German institutes (Rosenheim) because it is always locked in 3 points without having to engage with the throws.



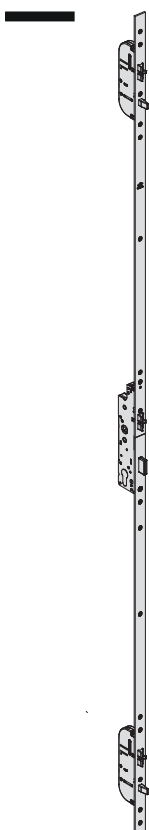
TYPE	DESCRIPTION	NO. LOCKING POINTS	THROWS	CENTRE DISTANCE	FACEPLATE	BACKSET	UNIT WEIGHT kg	No. PIECES	ITEM		
									TYPE	DIM.	HAND



CENTRE DISTANCE 92 MM											
▪ Zinc-plated steel 'U'-shaped adjustable faceplate 24 x 6 mm, height 2300 mm. - top adjustment 350 mm. - bottom adjustment 150 mm.	3	2	92	24	35	3.800	1	1	48816	35	0
	3	2	92	24	40	3.820	1	1	48816	40	0

- 3 lateral latchbolts.
- 3 latchbolts, 11 mm thick.

MATCHING ADJUSTABLE METAL STRIKES	
Central profile (1pc)+Divertors (2pcs) item	Profile
1.06461.03.1/2	steel type
1.06461.04.1/2	door type
1.06461.27.1/2	R type (overlapping)
1.06461.23.0	European groove



CENTRE DISTANCE 92 MM											
▪ Zinc-plated steel "flat" adjustable faceplate 24 x 3 mm, height 2300 mm. - top adjustment 350 mm. - bottom adjustment 150 mm.	3	2	92	24	35	3.800	1	1	48916	35	0
	3	2	92	24	40	3.820	1	1	48916	40	0

- 3 lateral deadbolts.
- 3 latchbolts, 11 mm thick.

MATCHING ADJUSTABLE METAL STRIKES	
central profile (1pc)+Divertors (2pcs) item.	Profile
1.06461.03.1/2	steel type
1.06461.04.1/2	door type
1.06461.27.1/2	R type (overlapping)
1.06461.23.0	European groove

TYPE	DESCRIPTION	kg	NO. PIECES	ITEM			
				UNIT WEIGHT	NO. PIECES	TYPE	DIM.
	<ul style="list-style-type: none"> <li>Zinc-plated steel flat strike kit 24x3 mm RH for "steel" profile</li> <li>SUPPLIED AS STANDARD:                             <ul style="list-style-type: none"> <li>- Strike for central lock 1 pc</li> <li>- Strike for divertors 2 pcs</li> </ul> </li> </ul>	0.310	6	1	06461	03	1
	<ul style="list-style-type: none"> <li>Zinc-plated steel flat strike kit 24x3 mm LH for "steel" profile</li> <li>SUPPLIED AS STANDARD:                             <ul style="list-style-type: none"> <li>- Strike for central lock 1 pc</li> <li>- Strike for divertors 2 pcs</li> </ul> </li> </ul>	0.310	6	1	06461	03	2
	<ul style="list-style-type: none"> <li>Zinc-plated steel "U"-shaped strike kit 24x6 mm RH for "door" profile</li> <li>SUPPLIED AS STANDARD:                             <ul style="list-style-type: none"> <li>- Strike for central lock 1 pc</li> <li>- Strike for divertors 2 pcs</li> </ul> </li> </ul>	0.310	6	1	06461	04	1
	<ul style="list-style-type: none"> <li>Zinc-plated steel "U"-shaped strike kit 24x6 mm LH for "door" profile</li> <li>SUPPLIED AS STANDARD:                             <ul style="list-style-type: none"> <li>- Strike for central lock 1 pc</li> <li>- Strike for divertors 2 pcs</li> </ul> </li> </ul>	0.310	6	1	06461	04	2
	<ul style="list-style-type: none"> <li>Zinc-plated steel strike kit RH for "R type" profile (overlapping)</li> <li>SUPPLIED AS STANDARD:                             <ul style="list-style-type: none"> <li>- Strike for central lock 1 pc</li> <li>- Strike for divertors 2 pcs</li> </ul> </li> </ul>	0.310	6	1	06461	27	1
	<ul style="list-style-type: none"> <li>Zinc-plated steel strike kit LH for "R type" profile (overlapping)</li> <li>SUPPLIED AS STANDARD:                             <ul style="list-style-type: none"> <li>- Strike for central lock 1 pc</li> <li>- Strike for divertors 2 pcs</li> </ul> </li> </ul>	0.310	6	1	06461	27	2
	<ul style="list-style-type: none"> <li>Reversible stainless steel strike kit for "European groove" profile</li> <li>SUPPLIED AS STANDARD:                             <ul style="list-style-type: none"> <li>- Strike for central lock 1 pc</li> <li>- Strike for divertors 2 pcs</li> </ul> </li> </ul>	0.310	6	1	06461	23	0

TYPE	DESCRIPTION	FOR SERIES / ITEM	kg	NO. PIECES	ITEM			
					UNIT WEIGHT	NO. PIECES	TYPE	DIM.
	<ul style="list-style-type: none"> <li>Nylon cover for outward opening of thermal cut aluminium profiles (lip height 7.5 - 10 mm)</li> </ul>	106463 24 0;106463 25 0 106463 34 0;106463 35 0 106465 24 0;106465 25 0 106465 34 0;106465 35 0	0.019	25	1	06141	79	0
	<ul style="list-style-type: none"> <li>Nylon cover for outward opening of thermal cut aluminium profiles (lip height 3 - 7.5 mm)</li> </ul>	106463 24 0;106463 25 0 106463 34 0;106463 35 0 106465 24 0;106465 25 0 106465 34 0;106465 35 0	0.019	25	1	06141	89	0

# 3 LATCHBOLTS



## TECHNICAL FEATURES

- Case thickness 15.5 mm
- Closed case
- Backsets 35-40 mm
- Centre distance 92 mm
- Steel case and cover
- Top and bottom adjustable faceplate 24x3 and 24x6
- Three 11-mm thick latchbolts
- 8 mm-thick deadbolts with 20 mm protrusion
- 8 mm square spindle
- DIN holes to fix handle plate

## FINISHES

- Zinc-plated cases and covers.
- Zinc-plated steel faceplate with corrosion resistance up to 480 hours.
- Zinc-plated latchbolt and deadbolts.

## HAND

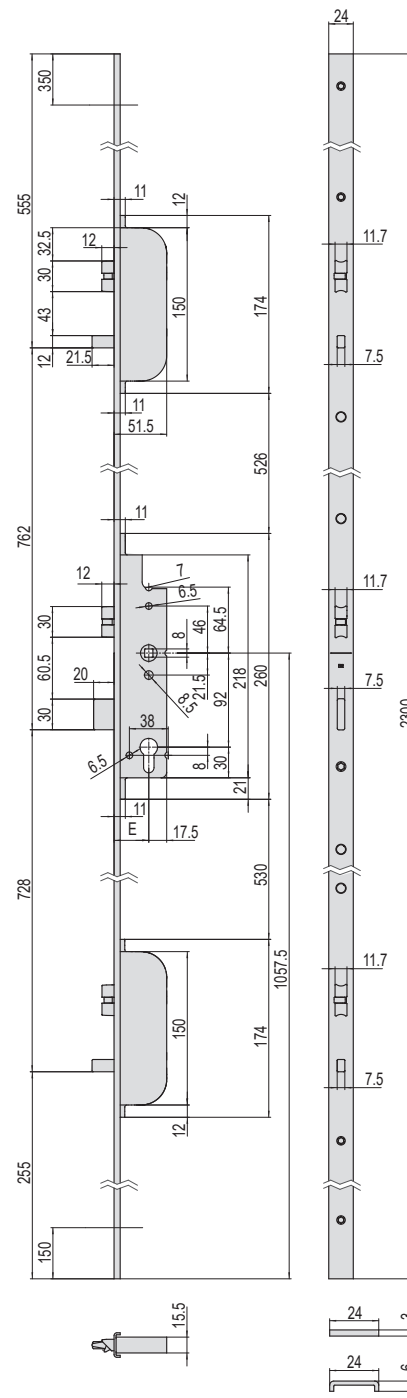
- 0 = non-handed

## SUPPLIED AS STANDARD

- Pair of nylon protective roses item 1.06012.01.0
- Cylinder and rose fixing screws.
- Instruction sheet.
- Nylon faceplate cover plugs.

## ON REQUEST

- Euro profile cylinder.
- Adjustable metal strikes  
(see special vademecum).



48916

48816

E = 35-40

## SPECIFICATIONS

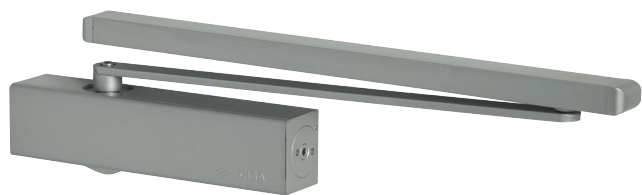
MULTIPOINT "3 LATCHBOLTS" MECHANICAL LOCK SERIES (488XX-XX-0 and 489XX-XX-0)  
 Lock classified 3S900G3030 in accordance with European Standard prEN 15685.  
 Multipoint gear lock (ref. CISA "3 latchbolts" type) with resistance to lateral thrust of 500Kg and front thrust of 400Kg.  
 Grade 3 Security. Grade 3 means the lock is suitable for EN 1627 certified doors up to resistance class WK/RC 2.

Lock suitable for doors for public use.  
 Locking system with 3 latchbolts, 11mm thick, locks the door securely without having to use the key. The 3 latchbolt system also keeps the door aligned at all times, correcting heat distortion. The 3 latchbolts are independent of each other: if one is forced, the other locking points remain securely engaged.  
 Zinc-plated steel faceplate with corrosion resistance up to 480 hours.  
 Compulsory parts: CISA- type cylinder and strike.

CISA  
recommends

**MAKE YOUR DOOR EASIER TO OPEN.**

Combine **3 Latchbolts** with a **cam action door closer** from the D6200 series to make the door easier to open, especially for the elderly and children.



**INCREASE YOUR SECURITY.**

Combine **3 Latchbolts** with **AP4 S** or **RS3 S cylinders** to increase resistance to forced entry.



## About Allegion™

Allegion (NYSE: ALLE) is a global pioneer in safety and security, with leading brands like CISA®, Interflex®, LCN®, Schlage®, SimonsVoss® and Von Duprin®. Focusing on security around the door and adjacent areas, Allegion produces a range of solutions for homes, businesses, schools and other institutions. Allegion is a \$2 billion company, with products sold in almost 130 countries.

For more visit [allegion.com](http://allegion.com)

